

# API Datasheet

## Device Status

The Device Status API makes it possible to check the roaming status of a specific SIM-based device by using events from the operators' network.

### CHARACTERISTICS

- **Apps can use data to offer valuable information to users visiting foreign countries and enhance their travel experience.**
- **Cost optimization, businesses can effectively reduce international roaming charges for their customers.**
- **Fraud detection and prevention by automatically flagging and responding to anomalies.**

### INDUSTRIES

MEDIA, ENTERTAINMENT & XR

TRANSPORT & LOGISTICS

FINANCIAL SERVICES & INSURANCE

ICT SERVICES

### SERVICES

LOCATION

IDENTITY

### PRODUCT FEATURES

- ❖ With smooth and uniform access to the function of knowing whether a user is or isn't in roaming, having this standardized information across operators through the use of a standard CAMARA API, our API provides a single point of entry, enabling effortless integration and utilization of telecommunications capabilities from multiple operators.
- ❖ By detecting and preventing fraud in roaming transactions, the application helps reduce financial losses for the organization and users.

### BENEFITS

- ✓ Hassle-free and enriching development experience that allows you to unlock the full potential of your creativity.
- ✓ Seamlessly integrate device status roaming into your applications without the need for custom implementations for each telco operator. This simplifies the development process and reduces the time-to-market.
- ✓ The ability to identify devices in roaming allows for a more accurate assessment of the risk associated with transactions and suspicious activities.

### POPULAR USE CASES

#### AVOID CHARGES

MEDIA, ENTERTAINMENT & XR

Services: Location

Our API empowers you to take charge of your roaming experience, ensuring you never receive an unpleasant surprise on your phone bill. With real-time access to your SIM card's roaming status, you are in control. Manage your data, usage and explore cost-effective roaming options while traveling.

#### WELCOME ROAMING

TRANSPORT & LOGISTICS

ICT SERVICES

Services: Location

Allows businesses and government entities that wish to maintain an effective connection with their users when they are roaming. With this functionality, you can send alerts and share relevant information in a timely manner, ensuring that messages reach the users. Keep an open line of communication with users, no matter where they are, to share vital information or important updates.

#### FRAUD MITIGATION

FINANCIAL SERVICES & INSURANCES

Services: Location

The "Anti-Fraud Use Case" focuses on preventing and addressing fraudulent activities in banking transactions involving suspicious SIM cards that may be in a roaming state. Detecting suspicious SIM cards based on their state (roaming) is critical, allowing the detection of potentially fraudulent states, thus increasing transaction security and ensuring the integrity of user data.

## GETTING STARTED WITH DEVICE STATUS API

### 01 CHOOSE A CHANNEL PARTNER

Select a suitable channel partner or payment aggregator that offers integration with the Open Gateway API to meet your needs and business goals.

### 02 DEVELOPER REGISTRATION

To use Open Gateway Products, you must undergo a registration process that includes signing up on both the Channel Partner and Operator platforms.

### 03 DEVICE STATUS API CONSUMPTION

After subscribing and sharing credentials, you can access the Open Gateway Product on registered Operators, making API calls through the Channel Partner's gateway.

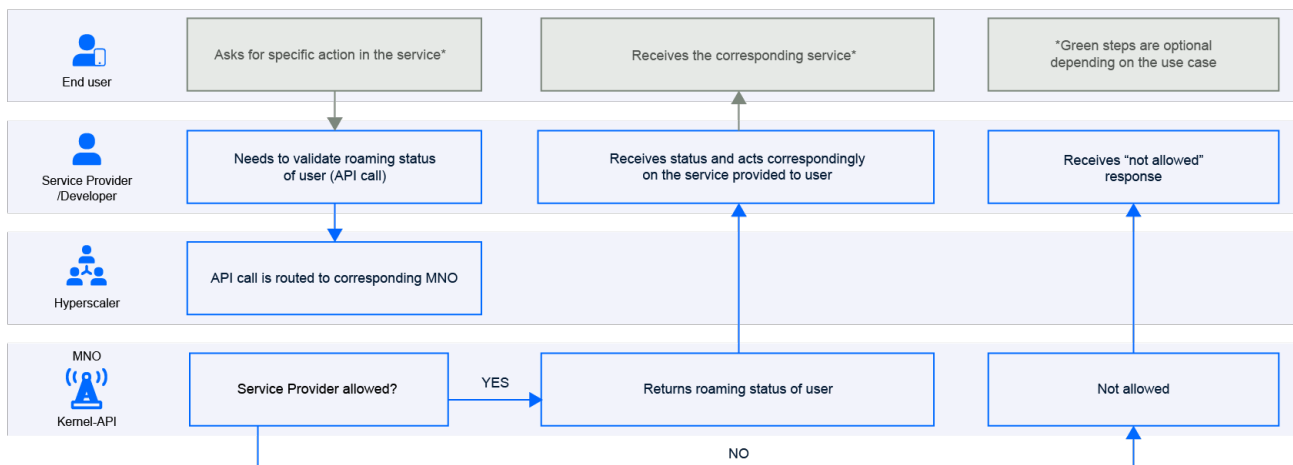
### 04 PRIVACY MANAGEMENT

Some Open Gateway Products require end user consent to access Operator's network capabilities on their behalf.

## PRODUCT SPECIFICATIONS

AUTHORIZATION	Pi-scope: device-roaming-status-roaming-read
APPLICABLE AUTHENTICATORS FOR ACQUIRING USER CONSENT	Yes, user consent is needed
API DOCUMENTATION	<a href="https://telefonica.github.io/opengateway-technical-documentation/device-status/">https://telefonica.github.io/opengateway-technical-documentation/device-status/</a>
INPUT PARAMETERS	header (x-correlator)
SERVICE RESPONSE	{"roaming": true}

## EXAMPLE USER FLOW



## FURTHER INFORMATION

Join the [Telefónica Open Gateway Developer Hub](#) to test our API, develop use cases and improve user experiences.

If you are interested in the potential of Telefónica Open Gateway initiative and you are willing to collaborate with us, [access our Partner Program](#).

For further questions about the initiative [contact our experts](#).

